

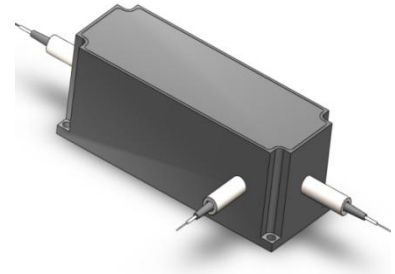
## High Power Circulator

### ☆ Features

- Low Insertion Loss
- High Return Loss
- High Isolation
- High Stability&Reliability

### ☆ Applications

- Fiber Sensor
- Testing Instrument
- Polarization Maintaining Fiber Amplifier
- Medical Equipment



### ☆ Specifications

Parameters		Unit	Value	
Model		-	HPMCIR	HPCIR
Center Wavelength		nm	980, 1030, 1064	980, 1030, 1064
Operating Wavelength Range		nm	±5	
Typ. Peak Isolation		dB	25	
Max. Isolation @ 23°C		dB	22	
Typ. Insertion Loss @ 23°C		dB	1.3	
Max. Insertion Loss @ 23°C		dB	1.5	
Max. Polarization Dependent Loss @ 23°C, Only For PI		dB	-	0.15
Extinction Ratio	Fast Axis Blocked	dB	23	-
	Both Axis Working	dB	20	-
Min. Return Loss(Input To Output)		dB	45	
Min. Cross Talk		dB	45	
Max. Average Optical Power		W	-	Total:20(Including Port 1 & Port 2)
Max. Optical Power	CW	W	1 , 2 , 3 , 5 , 10	
	Pulse Peak	kW	10	
Max. Tensile Load		N	5	
Fiber Type		-	Hi1060 PM Panda Fiber	Hi1060fiber Specified
Package Dimension		mm	82*38*38	91*38*38
Operating Temperature		°C	+10~+50	
Storage Temperature		°C	0~+60	

**Address:** 5F, Building 2, Invengo Industrial Park, TongGuan Road, GongMing Street, GuangMing New District ShenZhen, China

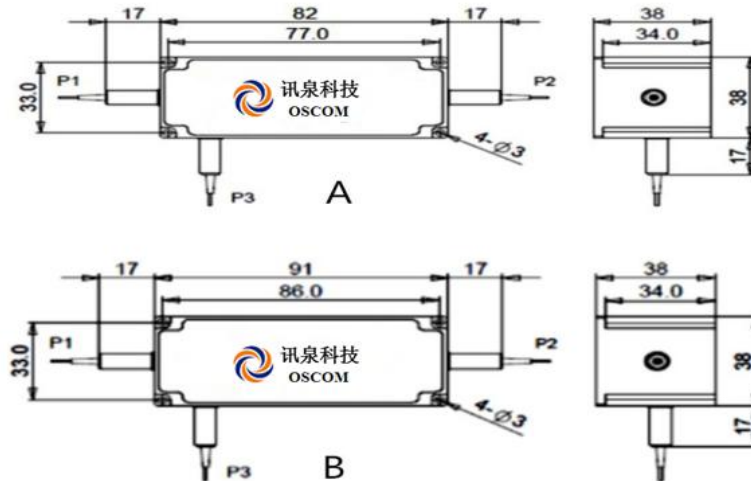
**Website:** [www.szoscom.com](http://www.szoscom.com)

**Phone:**+86-755-83118073

**Fax:** +86-755-83272391

**E-mail:** sales@szoscom.com

### ☆ Package Dimensions



### ☆ Ordering Information

Device ID	Explain	Option		
XX	The Device Type	XQ-HPMCIR	XQ-HPCIR	
XXXX	Center Wavelength	980=980nm	1064=1064nm	1030=1030nm
XX	Handling Power	01=1W 05=5W	02=2W	03=3W
X	Axis Alignment For PM	F=Slow axis working, Fast axis blocked working N=No axis		B=Both of axis
X	Fiber Type	1=Hi1060fiber	2=PM Panda fiber	3=Specified
XXX	Pigtail Type	250=250μm	900=900μm	
XX	Fiber Length	08=0.8m	10=1m	
X	Package Dimension	A=82*38*38mm	B=91*38*38mm	S=Specified

Example: XQ-HPMIR-1064-02-F-1-250-08-B